



**KANCHRAPARA COLLEGE**  
Kanchrapara, North 24-Parganas  
Pin - 743 145

Ph. No. 2585 8790  
2585 5159

E-mail - [info@kpcoll.ac.in](mailto:info@kpcoll.ac.in)  
ESTD - 1972

website: <http://www.kanchraparacollege.ac.in>

Ref. No.: *KPC/PC/Tender notice - 5/Renovation/2022-189* Date: *18/06/2022*

### Notice Inviting Tender

Sealed Quotations are invited from the reputed bonafied Contractor/ Supplier for Different type of Improvement / Different kind of work / Renovation / Repair under Kanchrapara College having sufficient credential and financial like (GST Certificate, PAN, P.Tax (Challan)(2020-21), Trade licence, Credential certificate & Income tax return for Last 3 Year updated and Similar Nature Of work done completion certificate of value at least 40% of the estimated amount of the respective work in a single contract within last 3 years with is applicable for eligibility in this tender ) capability for execution of works as depicted hereunder for participating in the tender.

| Sl. No. | Name of the work  | Estimated amount put to tender (including GST in Rs.) | Earnest Money 2% of Estimate Amount (in Rs.) | Cost of Tender Documents (Applicable for the successful Contractor only at the time of formal agreement) (in Rs.) |
|---------|---|---|--|---|
| 1       | PROPOSED RENOVATION WORK ESTIMATE FOR OLD BUILDING 1 <sup>ST</sup> FLOOR JENTS & LADIES TOILETS | 287799  | 5756   | 293555  |

#### Schedule Date and Time

|   |  |
|---|--|
| Last date of submission of Tender/quotation paper | 04.07. 2022, upto 2pm                  |
| Place of receipt of Quotation                     | Tender Box, Front of Principal Chamber |
| Time and date of opening of Quotation             | 07.07.2022, after 2pm                  |
| Place of opening of Quotation                     | Principal Chamber                      |

2. Please website also <http://www.kanchraparacollege.ac.in>
3. Tenderers/quotation shall ensure that their tenders quotation / duly sealed and signed, complete in all respects as per instructions contained in the Quotation Documents, are dropped in the tender box located at the address given bellow on or before the closing date and time indicated in the table above. Falling which the tenders will be treated as late and reject.
4. In the event of any of the above mentioned dates being declared as a holiday/closed day for the purchase organization, the tenders will be sold/received/opened on the next working day at the appointed time.
5. The quotation documents are not transferable.
6. The undersigned has received the right to accept or reject the tender without any reason whatsoever.

*B. Bera*  
18/6/22  
Principal

Kanchrapara College

**Principal**  
**Kanchrapara College**  
Kanchrapara, 24 Pgs (N)

*1st floor*

**PROPOSED RENOVATION WORK ESTIMATE FOR OLD BUILDING (GROUND FLOOR) GENTS & LADIES TOILET OF KANCHARAPARA COLLEGE AT HOLDING NO -2, SIRAJ MONDAL LANE WORDNO - 8, KANCHARAPARA, J.L.NO-2, MOUZA-BAHIRBAG, P.S-BIIPUR, PLOT NO- 1616,1627,1632,1635, KHATIAN NO- 2585, UNDER KANCHARAPARA MUNICIPALITY, PIN- 713145, DIST- NORSTH 24 PARGANAS**

Estimate as Per P.W.D Schedule Effective from (Building, Sanitary & Plumbing, Electrical works)

| Sl. No   | Description of Item  | No of floor | no      | length (M) | Breath (M) | Height (M) | Quantity | Unit    | Rate Rs. | Amount Rs |  |
|----------|--|-------------|---------|------------|------------|------------|----------|---------|----------|-----------|--|
| 1        | Taking out carefully Ranigunge pattern tiles from roof stacking serviceable tiles at site and removing rubbish as directed within a lead of 75m.   |             | 1       | 19.53      | 2.13       |            | 41.599   | m3      |          |           |  |
|          |  |             | 1       | 18         | 2.13       |            | 38.34    |         |          |           |  |
|          |  |             |         |            |            |            | 0        |         |          |           |  |
|          |  |             |         |            |            |            | 0        |         |          |           |  |
|          | Total  |             |         |            |            | 79.939     | m3       | 62.00   | 4956.21  |           |  |
| 2        | Stripping off worn out plaster and raking out joints of walls, ceilings etc. upto any height and in any floor including removing rubbish within a lead of 75m as directed.   |             | 1       | 19.53      | 1.8        |            | 35.154   |         |          |           |  |
|          |  |             | 1       | 18         | 2.1        |            | 37.8     |         |          |           |  |
|          |  |             |         |            |            |            | 0        |         |          |           |  |
|          |  |             |         |            |            |            | 0        |         |          |           |  |
|          | Total  |             |         |            |            | 72.954     |          | 19.00   | 1386.13  |           |  |
| 3        | Supplying, fitting and fixing Marble Slab/tile of 15 to 18 mm thickness in floor, lobby, stair, landing & treads etc. over 20 mm (av.) thick base of Cement mortar (1:2) laid with white cement slurry @ 4.4 kg/Sq.m before placing marble & jointed with white cement slurry @ 2.0 kg/Sq.m with necessary pigments including grinding and Granite polishing as per direction of Engineering -in -Charge in Ground Floor. (White cement and Pigment to be supplied by the Agency) (iii) Area of each Slab/tile exceeding 0.60 sq.m but not exceeding 1.00 sq.m.  |             | floor   |            |            |            |          |         |          |           |  |
|          |  |             | 1       | 3.52       | 1.8        |            | 6.336    |         |          |           |  |
|          |  |             | 1       | 3.94       | 1.8        |            | 7.092    |         |          |           |  |
|          |  |             |         |            |            |            | 13.428   |         | 1902.00  | 25540.06  |  |
| 4        | Supplying, fitting, fixing marble slab/tiles, 15 mm. to 18 mm. thick in dado / wall in 15 mm thick [avg] cement mortar (1:2) including making suitable arrangements to hold the stones properly by brass / copper hooks applying white cement slurry @ 4.4 kg/ sq.m at the back side of marble & pointing in cement mortar (1:2) (1 cement, 2 marble dust) with admixture of pigment matching the stone shades including polishing all complete as per direction of the Engineer-in-charge including cost of materials, labours, scaffolding, staging, curing complete. [White cement, Pigment to be supplied by the Agency](ii) Area of each slab/tile exceeding 0.3sq.m. but not exceeding 0.6 sq.m. |             | 1       | 19.53      | 1.8        |            | 35.154   |         |          |           |  |
|          |  |             | 1       | 18         | 1.8        |            | 32.4     |         |          |           |  |
|          |  |             | 0       | 2          | 1.8        |            | 0        |         |          |           |  |
|          |  |             | 0       | 0.9        | 1.8        |            | 0        |         |          |           |  |
|          |  |             |         |            |            |            | 67.554   |         | 1792.00  | 121056.77 |  |
| 5        | Applying Interior grade Acrylic Primer of approved quality and brand on plastered or concrete surface old or new surface to receive Distemper/ Acrylic emulsion paint including scraping and preparing the surface thoroughly, complete as per manufacturer's specification and as per direction of the EIC. (In Ground Floor)(b) Two Coats<br>ii) Solvent based interior grade Acrylic Primer   |             |         |            |            |            |          |         |          |           |  |
|          |  |             | Celling | 1          | 5.2        | 1.8        |          | 9.36    |          |           |  |
|          |  |             |         | 1          | 5.2        | 1.8        |          | 9.36    |          |           |  |
|          |  |             | Wall    | 1          | 19.53      | 1.52       |          | 29.686  |          |           |  |
|          |  |             |         | 0          | 1.3        | 2.1        |          | 0       |          |           |  |
|          |  |             |         |            |            |            |          | 0       |          |           |  |
|          |  |             |         |            |            |            |          | 0       |          |           |  |
| Two Coat | 1  |             |         |            | 48.406     | Sqm        | 48.5     | 2347.67 |          |           |  |

|    |   |   |       |      |  |        |     |          |      |  |  |          |
|----|---|---|-------|------|--|--------|-----|----------|------|--|--|----------|
| 6  | Protective and Decorative Textured exterior high class matt finish paint of approved quality, composed of special Thermoplastic Resin containing fine crystalline additives derive from Granite as per manufacturer's specification and as per direction of EIC to be applied over acrylic primer as required. The rate includes cost of material, labour, scaffolding and all incidental charges but excluding the cost of primer.<br>In Ground floor<br>Two Coat  |   |       |      |  |        |     |          |      |  |  |          |
|    | Celling   | 1 | 5.2   | 1.8  |  | 9.36   |     |          |      |  |  |          |
|    |   | 1 | 5.2   |      |  | 0      |     |          |      |  |  |          |
|    | Wall  | 1 | 19.53 | 1.52 |  | 29.686 |     |          |      |  |  |          |
|    |   | 1 | 18    | 1.52 |  | 27.36  |     |          |      |  |  |          |
|    |   |   |       |      |  | 0      |     |          |      |  |  |          |
|    |   |   |       |      |  | 0      |     |          |      |  |  |          |
|    |   | 1 |       |      |  | 66.406 | Sqm | 101      |      |  |  | 6706.97  |
| 7  | Supplying, fitting and fixing brass ferrule including connection with P.V.C. pipe of approved make upto 450 mm long with plumbing joint,brass over C.P. coupling at both ends, with cap and lining complete in all respect, including cutting trenches in all sorts of soil and filling up trenches as per direction of the Engineer-in-charge.<br>All Districts of West Bengal<br>Item No. Description of Item<br>(i) 25 mm dia.   |   |       |      |  |        | 4   | Nos      | 1825 |  |  | 7300.00  |
| 8  | Dismantling ferrule with all pipe connections.  |   |       |      |  |        | 4   | Each set | 172  |  |  | 688.00   |
| 9  | Supplying, fitting and fixing G.I. pipes of TATA make with all necessary accessories, specials viz. socket, bend, tee, union, cross, elbo, nipple, longscrow, reducing socket, reducing tee, short piece etc. fitted with holder bats clamps, including cutting pipes, making threads, fitting, fixing etc. complete in all respect including cost of all necessary fittings as required, jointing materials and two coats of painting with approved paint in any position above ground. (Payment will be made on the centre line measurements of total pipe line including all specials. No separate payment will be made for accesories, specials. Payment for painting will be made seperately)<br>(B) For Concealed Work<br>(b) 20 mm dia. medium quality |   |       |      |  |        | 30  | mtr      | 266  |  |  | 7980.00  |
| 10 | Supplying, fitting and fixing complet set of ceramic western commodes with tap ,best quality  | 2 |       |      |  |        |     | Each set | 9860 |  |  | 19720.00 |
| 11 | Supplying, fitting and fixing complet set of white ceramic urin pan for mane ,best approved quality and brand.  | 3 |       |      |  |        | 0   | Each set | 1980 |  |  | 5940.00  |
| 12 | Supplying, fitting and fixing complet set of white ceramic urin pan for ladies ,best approved quality and brand.  | 2 |       |      |  |        |     |          | 1420 |  |  | 2840.00  |
| 13 | Supplying, fitting and fixing bib cock or stop cock (d) (i) Chromium plated angular Stop Cock with wall flange (Equivalent to Code No. 5053 & Model - Florentine of Jaquar or similar brand).   |   |       |      |  |        | 6   | each     | 815  |  |  | 4890.00  |
|    | Supplying, fitting and fixing low-down cistern parts.<br>(i) Internal fittings for cistern complete of approved make  |   |       |      |  |        | 4   |          | 284  |  |  | 1136.00  |
| 14 | (ii) Outlet Assembly  |   |       |      |  |        | 2   |          | 279  |  |  | 558.00   |
|    | (iii) Intlet Assembly   |   |       |      |  |        | 2   |          | 64   |  |  | 128.00   |

|   |   |   |  |  |  |      |      |        |             |
|---|---|---|--|--|--|------|------|--------|-------------|
|   | Rubber Kid  |   |  |  |  | 2    |      | 304    | 608.00      |
|   | Knob  |   |  |  |  | 2    |      | 304    | 608.00      |
| 15  | Supplying, fitting and fixing white vitreous china best quality approved make wash basin with C.I. brackets on 75 mm X 75 mm wooden blocks, C.P. waste fittings of 32 mm dia., one approved quality brass C.P. pillar cock of 15 mm dia., C.P. chain with rubber plug of 30 mm dia., approved quality P.V.C. waste pipe with C.P. nut 32 mm dia., 900 mm long approved quality P.V.C. connection pipe with heavy brass C.P. nut including mending good all damages and painting the brackets with two coats of approved paint. (ii) 550 mm X 400 mm size  |   |  |  |  | 4    |      | 2208   | 8832.00     |
| 16  | Supplying, Fitting & Fixing 30 mm thick Double Leaf Factory made solid Panel PVC Door Shutter consisting of outer frame made out of M.S. tubes of 19 gauge thickness and size 19 mmx19 mm for styles, top and bottom rails, M.S. frame shall have cost of steel primers of approved make and manufacture, M.S. frame covered with 5 mm th. heat moulded PVC "C" channel of size 30 mm th, 70 mm width out of which 50 mm shall be flat and 20 mm shall be tapered in 45 degree angle on either sides forming styles; and 5 mm th. 95 mm wide PVC sheet out of which 75 mm shall be flat and 20 mm tapered in 45 degree on the inner side to form top & bottom rail and 115 mm wide PVC sheet out of which 75mm shall be flat and 20 mm shall be tapered on both sides to form lock rail. Top, bottom and lock rails |   |  |  |  |      |      |        |             |
|   |   |   |  |  |  |      |      |        |             |
|   |   | 6 |  |  |  |      | nos  | 4390.8 | 26344.80    |
| 17  | Supplying, fitting and fixing Marble Slab for urinal guard over 20 mm thickness   | 2 |  |  |  | 0.85 | sqm  | 1902   | 1616.70     |
| 18  | Supplying, fitting and fixing decorativ mirror 2'2'6" with back side 10mm thickness play (according to market prise )   | 2 |  |  |  |      | each | 2890   | 5780.00     |
| Total   |   |   |  |  |  |      |      | Rs     | 256963.30 + |
|   |   |   |  |  |  |      |      | Rs     | 30835.60 +  |
|   |   |   |  |  |  |      |      | Rs     | 5139.27 +   |
|   |   |   |  |  |  |      |      | Rs     | 2877.99     |
| Final Estimate Amount   |   |   |  |  |  |      |      | Rs     | 295816.15   |
|   |   |   |  |  |  |      |      | Say Rs | 295816.00   |
| <b>Rupees Two Lakh Ninty Five Thousand Eight Hundred Sixteen Only</b> |   |   |  |  |  |      |      |        |             |

Signature of Owner: -

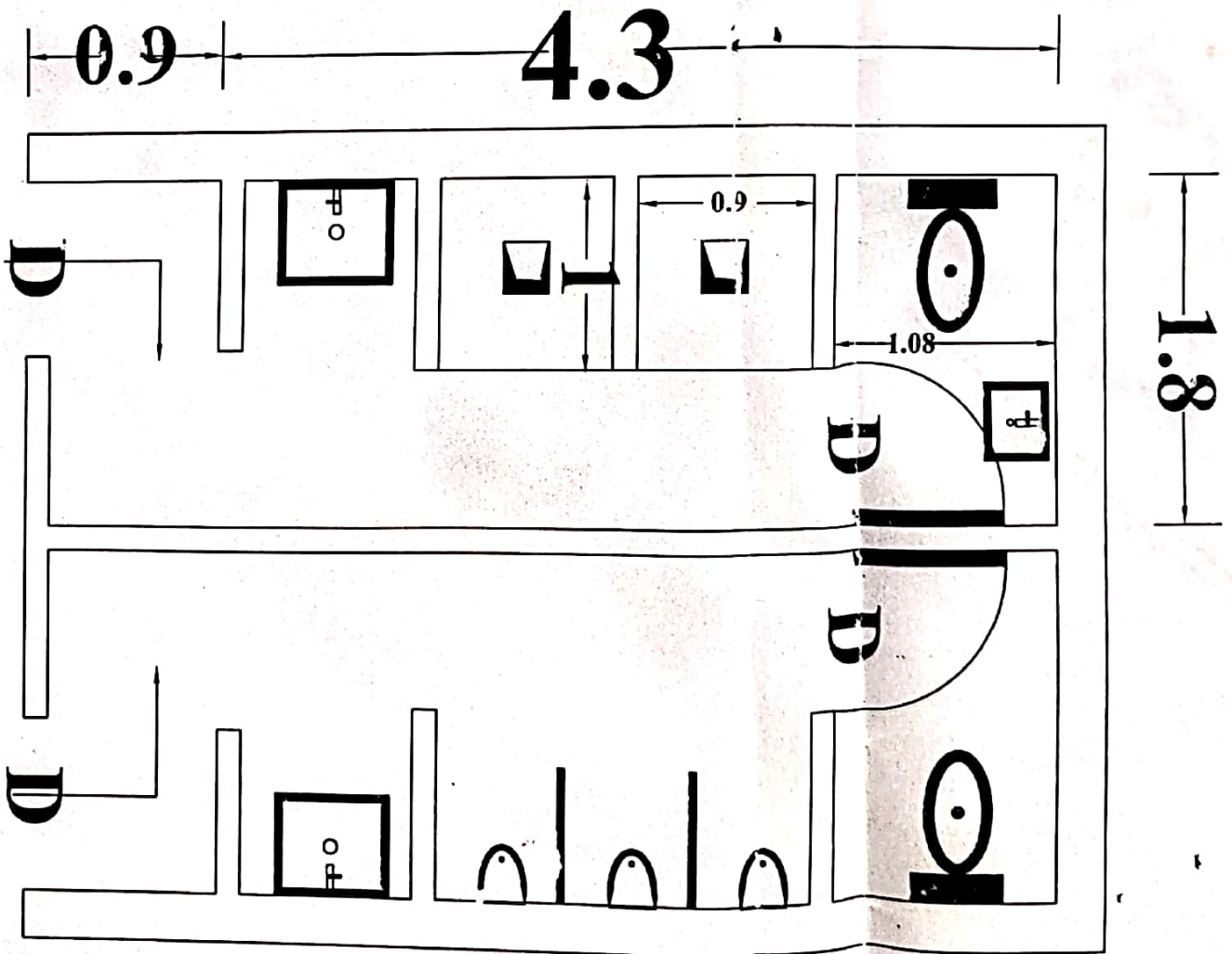
*Prasanna*  
18/6/22  
Principal  
Kanchrapara College  
Kanchrapara, 24 Pgs (N)

Estimated By- *Manoj Mistri*  
18/6/22  
**MANOJ MISTRI**  
Diploma Civil Engineer  
Reg. No.-61033 (ICE (I))

**PROPOSED RENOVATION WORK PLAN FOR OLD BUILDING  
 GROUND FLOOR JENTS & LADISE TOILET OF KANCHARAPARA  
 COLLEGE AT HOLDING NO -2 , SIRAJ MONDAL LANE WORDNO - 8 ,  
 KANCHARAPARA , J.L NO-2 , MOUZA- BAHIRBAG, P.S-BIJPUR, PLOT  
 NO- 1616,1627,1632,1635, KHATIAN NO- 2585, UNDER KANCHARAPARA  
 MUNICIPALITY, PIN-713145 , DIST- NORSTH 24 PARGANAS**

LADIES TOILET

JENTS TOILET



SIGNATURE OF  
 OWNER :-

DRAWN BY:-

*Manoj Mistri*  
**MANOJ MISTRI**  
 Diploma Civil Engineer  
 Reg. No.-61633 (ICE (I))