



KANCHRAPARA COLLEGE

Kanchrapara, North 24-Parganas
Pin - 743 145

Ph. No. 2585 8790
2585 5159

E-mail - info@kpcoll.ac.in

ESTD - 1972

website: <http://www.kanchraparacollege.ac.in>

Ref. No.: *KPC/PC/Tender notice-3/Renovation/2022-187*

Date: *18/06/2022*

Notice Inviting Tender

Sealed Quotations are invited from the reputed bonafied Contractor/ Supplier for Different type of Improvement / Different kind of work / Renovation / Repair under Kanchrapara College having sufficient credential and financial like (GST Certificate, PAN, P.Tax (Challan)(2020-21), Trade licence, Credential certificate & Income tax return for Last 3 Year updated and Similar Nature Of work done completion certificate of value at least 40% of the estimated amount of the respective work in a single contract within last 3 years with is applicable for eligibility in this tender) capability for execution of works as depicted hereunder for participating in the tender.

Sl. No.	Name of the work	Estimated amount put to tender (including GST in Rs.)	Earnest Money 2% of Estimate Amount (in Rs.)	Cost of Tender Documents (Applicable for the successful Contractor only at the time of formal agreement) (in Rs.)
1	PROPOSED RENOVATION WORK ESTIMATE FOR OLD BUILDING FOR 2 NOS(GROUND FLOOR & 1 ST FLOOR) JENTS STUDENTS TOILETS	243671	4873	248544

Schedule Date and Time

Last date of submission of Tender/quotation paper	04.07. 2022, upto 2pm
Place of receipt of Quotation	Tender Box, Front of Principal Chamber
Time and date of opening of Quotation	07.07.2022, after 2pm
Place of opening of Quotation	Principal Chamber

- Please website also <http://www.kanchraparacollege.ac.in>
- Tenderers/quotation shall ensure that their tenders-quotation /duly sealed and signed, complete in all respects as per instructions contained in the Quotation Documents, are dropped in the tender box located at the address given bellow on or before the closing date and time indicated in the table above. Falling which the tenders will be treated as late and reject.
- In the event of any of the above mentioned dates being declared as a holiday/closed day for the purchase organization, the tenders will be sold/received/opened on the next working day at the appointed time.
- The quotation documents are not transferable.
- The undersigned has received the right to accept or reject the tender without any reason whatsoever.

[Signature]
Principal

Kanchrapara College

Principal
Kanchrapara College
Kanchrapara, 24 Pgs (N)

old Building (Near Principals Room)

PROPOSED RENOVATION WORK ESTIMATE FOR 2 NOS (GROUND & 1ST FLOOR) JENTS STUDENTS TOILET OF KANCHARAPARA COLLEGE AT HOLDING NO -2, SIRAJ MONDAL LANE WORDNO - 8, KANCHARAPARA, J.L NO-2, MOUZA-BAHIRBAG, P.S-BIIPUR, PLOT NO- 1616,1627,1632,1635, KHATIAN NO- 2595, UNDER KANCHARAPARA MUNICIPALITY, PIN-713145, DIST- NORSTH 24 PARGANAS

Estimate as Per P.W.D. Schedule Effective from (Building, Sanitary & Plumbing, Electrical works)

Sl. No	Description of Item	no	length (M)	Breath (M)	Height (M)	Quantity	Unit	Rate Rs.	Amount Rs		
1	Taking out carefully Ranigunge pattern tiles from roof stacking seviceable tiles at site and removing rubbish as directed within a lead of 75m.	4	3.6	1.3		18.72	m3				
		4	2	1.3		10.4					
						0					
						0					
		Total						29.12	m3	62.00	1805.44
2	Stripping off worn out plaster and raking out joints of walls, ceilings etc. upto any height and in any floor including removing rubbish within a lead of 75m as directed.	4	3.6	1.8		25.92					
		2	2	2.1		8.4					
						0					
					0.1	0					
		Total						34.32		19.00	652.08
3	Supplying, fitting and fixing Marble Slab/tile of 15 to 18 mm thickness in floor, lobby, stair, landing & treads etc. over 20 mm (av.) thck base of Cement mortar (1:2) laid with white cement slurry @ 4.4 kg/Sq.m before placing marble & jointed with white cement slurry @ 2.0 kg/Sq.m with necessary pigments including grinding and Granite polishing as per direction of Engineering -in -Charge in Ground Floor. {White cement and Pigment to be supplied by the Agency} (iii) Area of each Slab/tile exceeding 0.60 sq.m but not exceeding 1.00 sq.m.										
		2	2.7	2		10.8					
		2	2	0.9		3.6					
		Total						14.4		1902.00	27388.80
4	Supplying, fitting, fixing marble slab/tiles, 15 mm. to 18 mm. thick in dado / wall in 15 mm thick [avg] cement mortar (1:2) including making suitable arrangements to hold the stones properly by brass / copper hooks applying white cement slurry @ 4.4 kg/ sq.m at the back side of marble & pointing in cement mortar (1:2) (1 cement, 2 marble dust) with admixture of pigment matching the stone shades including polishing all complete as per direction of the Engineer-in-charge including cost of materials, labours, scaffolding, staging, curing complete. [White cement, Pigment to be supplied by the Agency](ii) Area of each slab/tile exceeding 0.3sq.m. but not	4	2.7	1.8		19.44					
		2	2	1.8		7.2					
		4	2	1.8		14.4					
		4	0.9	1.8		6.48					
		Total						47.52		1792.00	85155.84
5	Plaster (to wall, floor, ceiling etc.) with sand and cement mortar including rounding off or chamfering corners as directed and raking out joints including throating, nosing and drip course, scaffolding/staging where necessary (Ground floor).[Excluding cost of chipping over concrete surface]										
		(b) 20mm th. Plaster	4	2.7	1.55		16.74				
			4	2	1.55		12.4				
			4	0.9	1.55		5.58				
			2	2	1.55		6.2				
			2	1.1	1.55		3.41				
		Total						44.33	m2	172	7624.76
6	Neat Cement Punning about 1.50mm th. In wall dado windows sills	0	0		0.75	0	m2	38	0.00		

7	Applying Interior grade Acrylic Primer of approved quality and brand on plastered or concrete surface old or new surface to receive Distemper/ Acrylic emulsion paint including scraping and preparing the surface throughly, complete as per manufacturer's specification and as per direction of the EIC. (In Ground Floor)(b) Two Coats ii) Solvent based interior grade Acrylic Primer											
	Celling	4	3.6	2		28.8						
						0						
	Wall	2	12.5	1.55		38.75						
		0	1.3	2.1		0						
						0						
						0						
	Two Coat					67.55	Sqm	48.5				3276.18
8	Protective and Decorative Textured exterior high class matt finish paint of approved quality, composed of special Thermoplastic Resin containing fine crystalline additives derive from Granite as per manufacturer's specification and as per direction of EIC to be applied over acrylic primer as required. The rate includes cost of material, labour, scaffolding and all incidental charges but excluding the cost of primer. In Ground floor Two Coat											
	Celling	4	3.6	2		28.8						
						0						
	Wall	2	12.5	1.55		38.75						
		0	1.3	2.1		0						
						0						
						0						
						67.55	Sqm	101				6822.55
9	Supplying, fitting and fixing brass ferrule including connection with P.V.C. pipe of approved make upto 450 mm long with plumbing joint, brass over C.P. coupling at both ends, with cap and lining complete in all respect, including cutting trenches in all sorts of soil and filling up trenches as per direction of the Engineer-in-charge. All Districts of West Bengal Item No. Description of Item (i) 25 mm dia.					4	Nos	1825				7300.00
10	Dismantling ferrule with all pipe connections.					4	Each set	172				688.00
11	Supplying, fitting and fixing G.I. pipes of TATA make with all necessary accessories, specials viz. socket, bend, tee, union, cross, elbo, nipple, long screw, reducing socket, reducing tee, short piece etc. fitted with holder bats clamps, including cutting pipes, making threads, fitting, fixing etc. complete in all respect including cost of all necessary fittings as required jointing materials and two coats of painting with approved paint in any position above ground. (Payment will be made on the centre line measurements of total pipe line including all specials. No separate payment will be made for accesories, specials. Payment for painting will be made seperately) (B) For Concealed Work (b) 20 mm dia. medium quality					15	mtr	266				3990.00

	Supplying, fitting and fixing complet set of ceramic western commodes, best quality	2					Each set	9860	19720.00
3	Supplying, fitting and fixing complet set of white ceramic urin pan for mane, best approved quality and brand.	2				0	Each set	1980	3960.00
14	Supplying, fitting and fixing bib cock or stop cock (d) (i) Chromium plated angular Stop Cock with wall flange (Equivalent to Code No. 5053 & Model - Florentine of Jaguar or similar brand).					6	each	815	4890.00
15	Supplying, fitting and fixing concealed cistern of approved make with flash plate ute/Loop/Shell/Nova (Code No. concealo-H(80mm Body sap code 508179 of Hindware or equivalent). Matt/Gloss					4		7440	29760.00
16	Supplying, fitting and fixing low-down cistern parts. (i) Internal fittings for cistern complete of approved make					4		284	1136.00
	(ii) Outlet Assembly					4		279	1116.00
	(iii) Intlet Assembly					4		64	256.00
	(iv) Rubber Kid					4		304	1216.00
	(v) Knob					4		304	1216.00
17	Supplying, fitting and fixing white vitreous china best quality approved make wash basin with C.I. brackets on 75 mm X 75 mm wooden blocks, C.P. waste fittings of 32 mm dia., one approved quality brass C.P. pillar cock of 15 mm dia., C.P. chain with rubber plug of 30 mm dia., approved quality P.V.C. waste pipe with C.P. nut 32 mm dia., 900 mm long approved quality P.V.C. connection pipe with heavy brass C.P. nut including mending good all damages and painting the brackets with two coats of approved paint. (ii) 550 mm X 400 mm size					2		2208	4416.00
18	Fixing only exhaust fan after making hole in wall and making good damages and smooth cement finish etc. as practicable as possible and providing necy. length of PVC insulated wire and making connection for exhaust of following diamete(b) 30 cm (12")					2		329	658.00
19	Exhaust Fan					2	Nos	800	1600.00
20	Distn. wiring with 2 x 36/0.3 (2.5 sqmm) single core stranded copper conductor PVC insulated and unsheathed copper wire (Brand approved by EIC) in 19mm dia 3 mm thick polythene pipe with 1x22/0.3 (1.5sqmm) PVC insulated and unsheathed coper wire as ECC, complete with all accessories embedded in wall (for 15 A plug point/exhaust fan point)					18	RM	162	2916.00
21	Supplying, fitting and fixing Marble Slab for urinal guard over 20 mm thickness	4				1.65	sqm	1902	7608.00
Total								Rs	217564.00
								Rs	26107.68
								Rs	4351.28
								Rs	2436.72
								Rs	250459.68
								Say Rs	250460.00
Rupees Two Lakh Ffty Thousand Four Hundred Sixty Only									

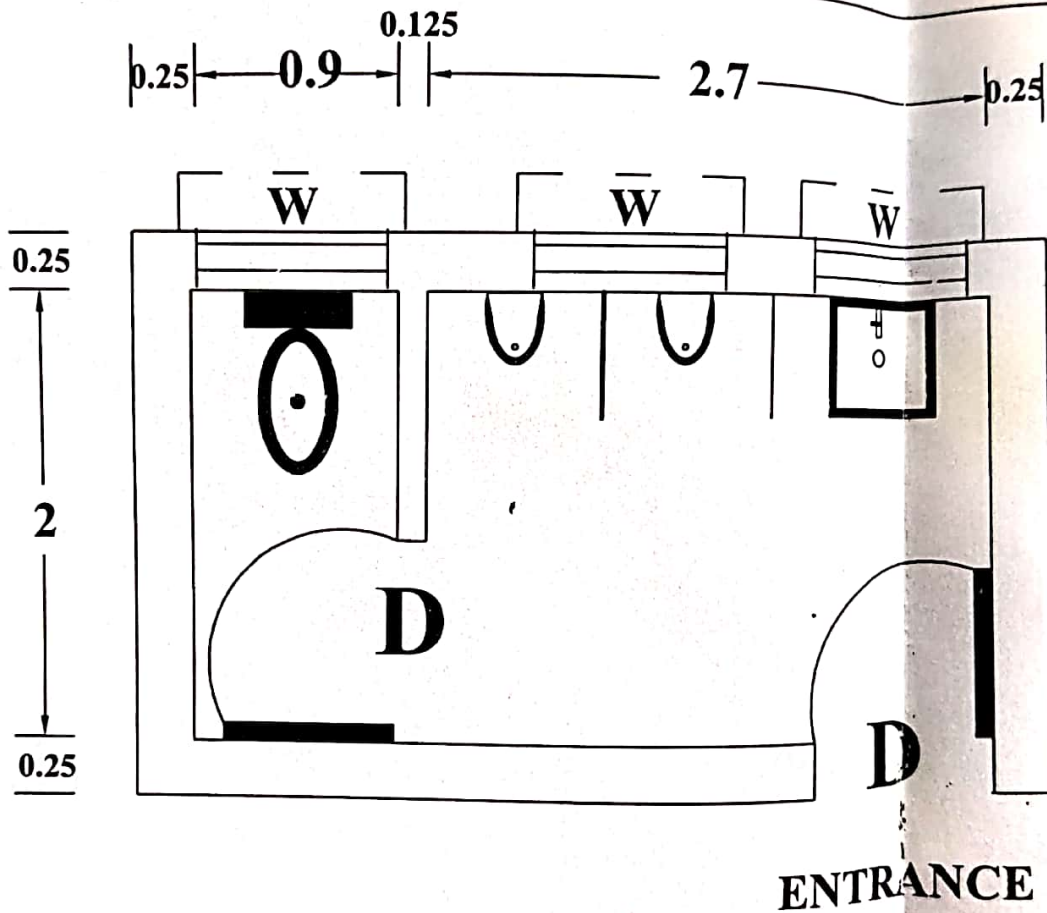
Signature of Owner: -

P. Bera 18/10/22
Principal
Kanchrapara College
Kanchrapara, 24 P.S. IN

Estimated By-

Manoj Mishra
MANOJ MISHRA
Diploma Civil Engineer
Reg. No.-61633 (ICE (I))

PROPOSED RENOVATION WORK FOR 2 NOS (GROUND & 1ST FLOOR) JENTS STUDENTS TOILET OF KANCHARAPARA COLLEGE AT HOLDING NO -2 , SIRAJ MONDAL LANE WORDNO -8, KANCHARAPARA , J.L NO-2 , MOUZA- BAHIRBAG, P.S-BIJPUR, PLOT NO- 1616,1627,1632,1635, KHATIAN NO- 2585, UNDER KANCHARAPARA MUNICIPALITY, PIN-713145 , DIST- NORSTH 24 PARGANAS



NOTE:- SAME WORK IN GROUND FLOOR & 1ST FLOOR

SIGNATURE OF OWNER :-

DRAWN BY:- *Manoj Mistry*
MANOJ MISTRY
 Diploma Civil Engineer
 Reg. No. 61633 /ICE (M)